

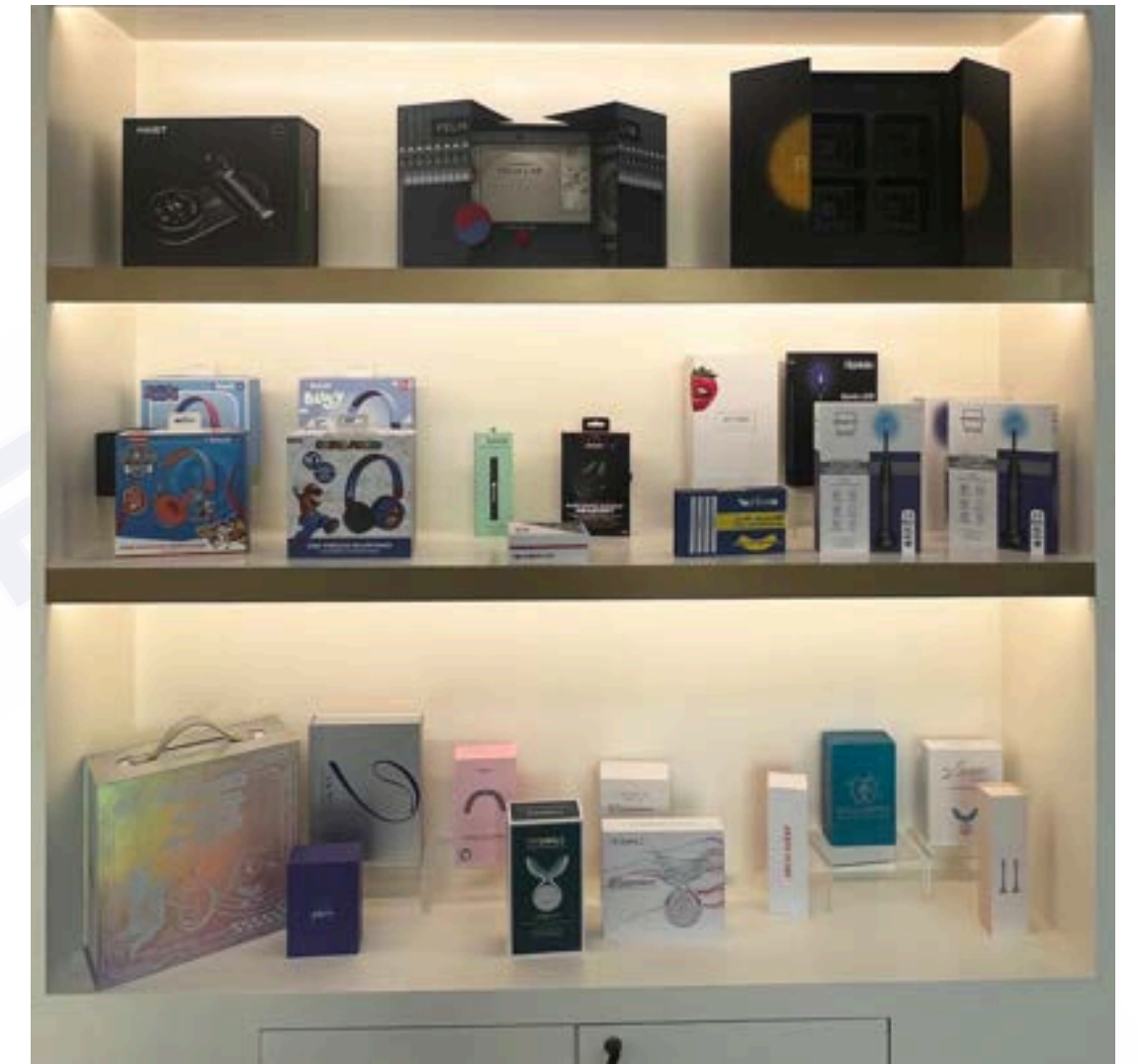
GENTLEVER

**FOCUS ON CUSTOM
PACKAGING SOLUTION**

PROFESSIONAL BOXES MANUFACTURER

About Us

At Gentlever, we are committed to creating high-quality custom packaging that helps brands stand out. From rigid boxes, foldable boxes, corrugated cartons, and display packaging to luxury paper bags and product inserts, we provide complete solutions tailored to different industries. Our packaging serves cosmetics, skincare, jewelry, watches, wine & spirits, food & confectionery, apparel, and e-commerce brands worldwide.



Our Experience

- **20+ Years** of Manufacturing Expertise
- **200+ Skilled Employees** with strong design and engineering capabilities
- **60+ Countries** Served with trusted long-term partnerships
- **99% Quality Pass Rate** backed by strict QC processes

Certifications & Sustainability

- **FSC Certified materials** for eco-friendly production
- **ISO Quality Standards** are applied in every stage of manufacturing
- Options for **recyclable, biodegradable, and eco paper** to meet sustainability goals

Our Advanced Equipment



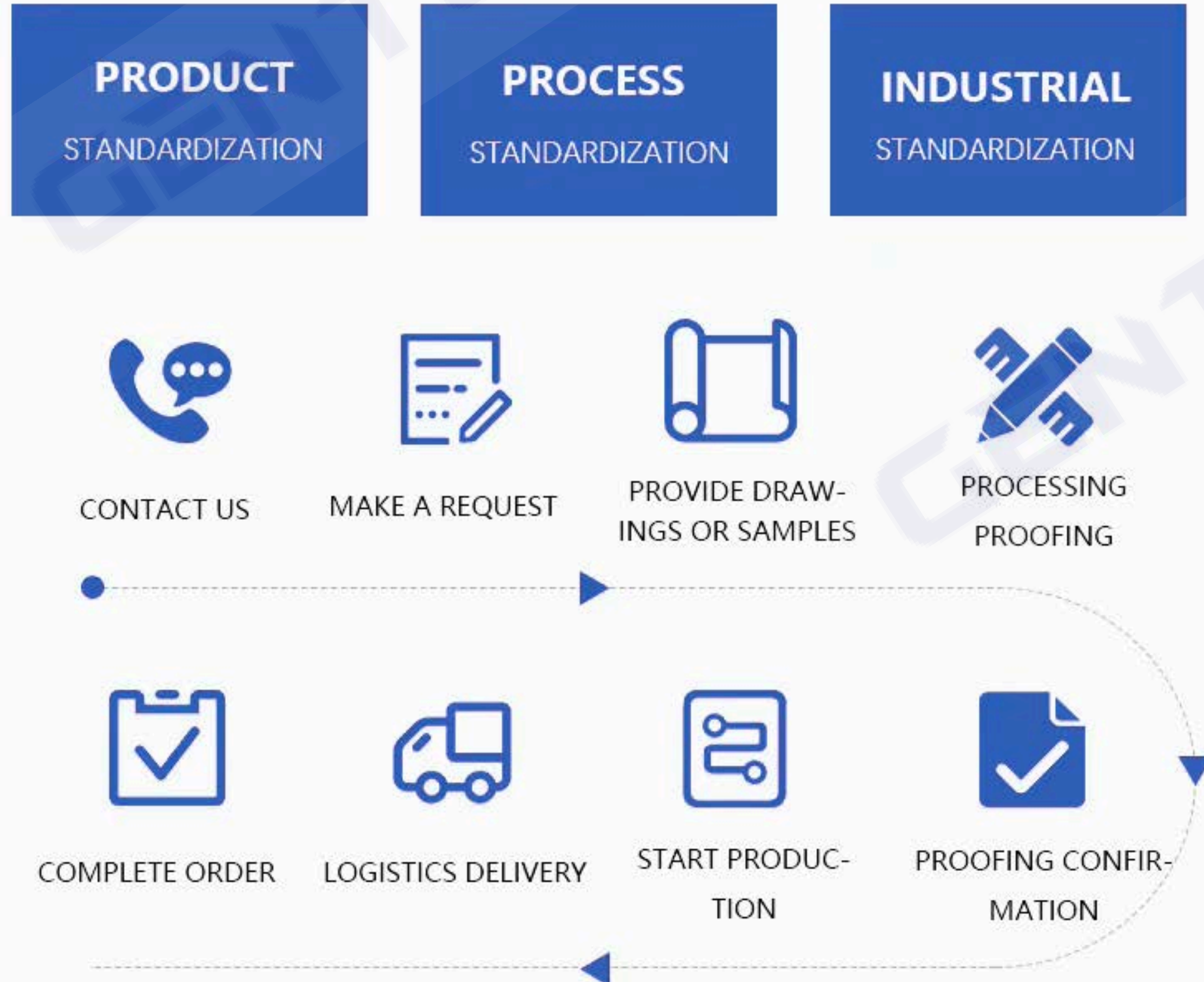
Our Skilled Team

We have over 200 employees, including experienced press operators, technicians who fine-tune cutting and stamping, and QC staff who check every batch by hand. Our designers prepare dielines and samples before mass production, making sure each project is both practical and brand-ready. It's this teamwork that turns every packaging idea into reality.



Our Production Process

PROFESSIONALISM DETERMINES QUALITY, QUALITY
ESTABLISHES CUSTOMER RELATIONSHIP



At Gentlever, we make custom packaging simple and transparent. From the first consultation to final delivery, every step is handled with care and precision. Clients start by **sharing requirements or drawings**, and our team provides professional layout and material suggestions.

A **sample** is then produced for confirmation before moving to **full production**. With strict quality checks and efficient logistics, we ensure each order is completed on time and meets the highest standards.

Our Primary Product



Jewelry Box



Watch Box



Wine Boxes



Perfume Box



Cosmetic Box



Gift Box

Velvet

Soft and elegant texture, ideal for creating a luxurious unboxing experience. Perfect for jewelry and gift packaging where a premium feel is essential.

→ Jewelry Box | Perfume Box | Gift Box



PU Leather

A smooth, premium surface that adds structure and elegance. Widely used in watch and perfume packaging to create a high-end brand presence.

→ Watch Box | Perfume Box | Wine Box



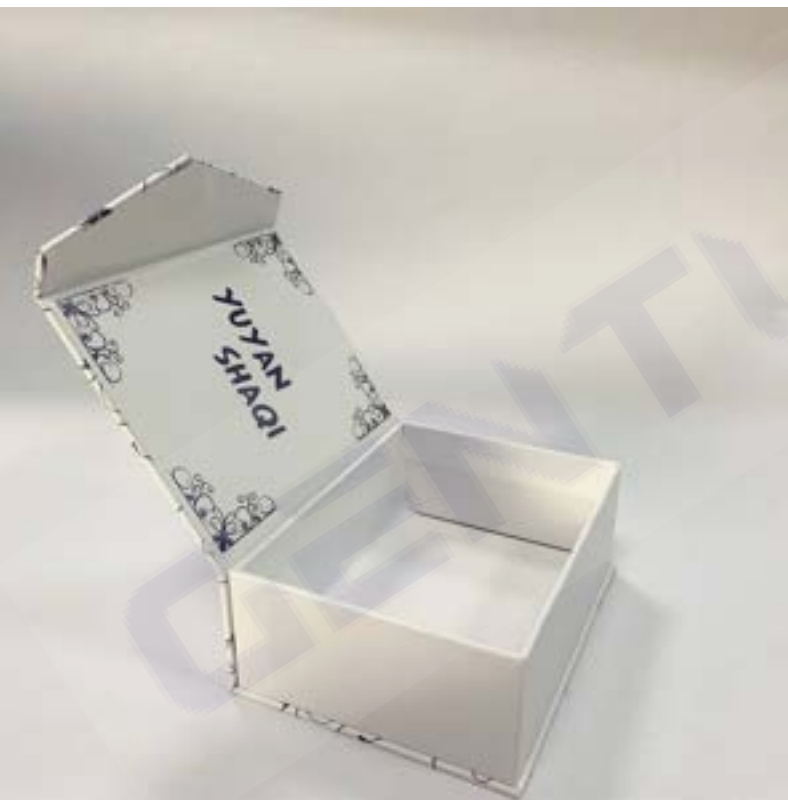
Rigid Paper

A classic and versatile material widely used for premium packaging. Rigid paperboard provides excellent structure, durability, and a smooth surface for printing and finishing.

→ Jewelry Box | Perfume Box | Cosmetic Box | Gift Box



Our Product — Rigid Box



Magnetic Box



Base and Lid Box



Drawer Style Box



Foldable Box



Double Open Box



Book Style Box



Round Box



Heart Shaped Box



Magnetic Boxes

Magnetic boxes are a premium packaging solution with a sleek closure design, widely used for cosmetics, jewelry, and gift products. They combine elegance with practicality and can be customized in multiple styles.



Foldable Box

Foldable boxes are designed to reduce shipping volume while maintaining durability and premium appeal. They are versatile, easy to assemble, and suitable for industries ranging from retail and e-commerce to luxury gifting.



Drawer Style Boxes

Drawer boxes, also known as sliding boxes, feature a pull-out structure that combines elegance with functionality. The sliding design provides a premium unboxing experience.



Double Open Rigid Box

The double open box opens symmetrically from both sides, similar to a case, creating a premium and ceremonial unboxing effect. This style is often chosen for luxury gift sets, jewelry, and cosmetics, where presentation plays a key role.



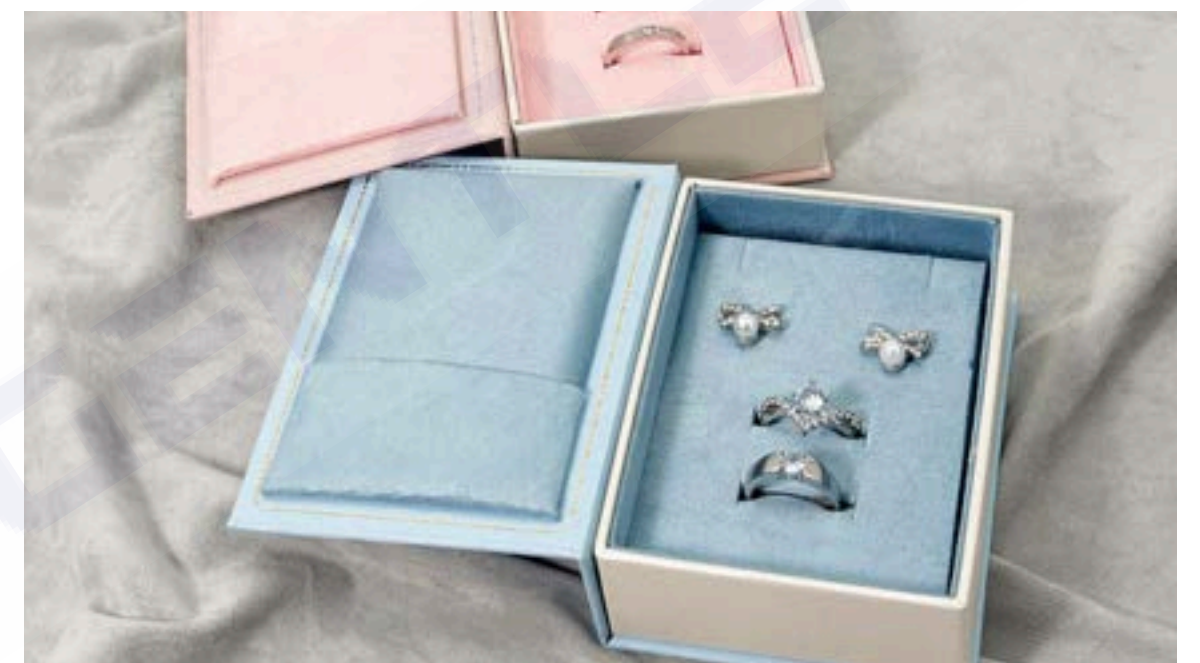
Base and Lid Box (Two-Piece Box)

The base and lid box consists of a bottom tray with a fully covering lid. It is simple, versatile, and cost-effective, making it a popular choice for apparel, shoes, chocolate, and general retail products. With endless customization options in finishes, inserts, and sizes, it adapts to various industries with ease.



Book Style Box

The book style box resembles a hardcover book with a flap opening to the side, offering both protection and a refined look. Its sturdy structure provides durability, while the elegant presentation enhances brand image and elevates the customer experience.



Shaped Boxes

Special-shaped boxes are designed to break away from traditional square and rectangular packaging. With unique forms such as heart, round, hexagon, or other custom die-cut shapes, these boxes create a memorable unboxing experience and enhance brand recognition.





Corrugated Shipping Box



Corrugated Display Stand



Corrugated Tray



Corrugated Gable Box

Corrugated Printed Boxes

Paper Type Corrugated board

Thickness Range 0.9mm – 9.9mm

Wall Construction Single-wall
Double-wall
Triple-wall

Sustainability 100% recyclable

Logo Printing Offset printing
Flexographic printing
Four-Color Printing

Product Portfolioty Printed shipping boxes
corrugated carriers
retail display boxes
postage boxes
custom mailers

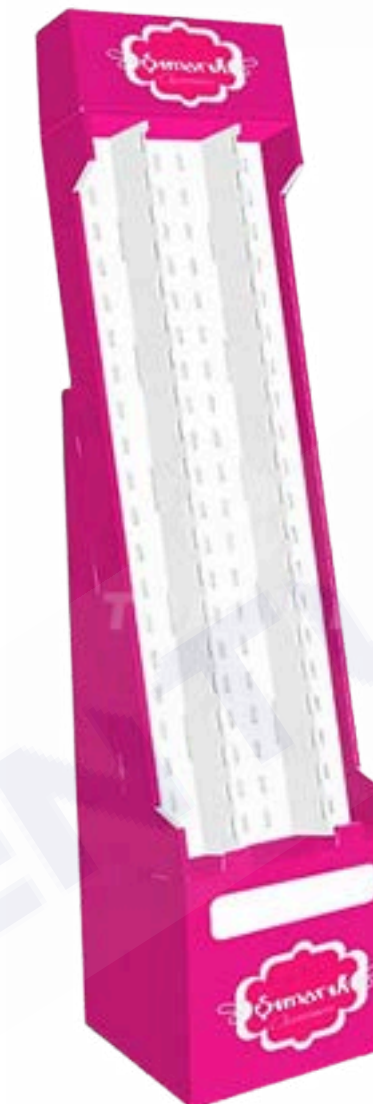
Shipping & Mailer Box

Shipping cartons keep products safe for bulk and international transport. Mailer boxes, with their self-locking design, are ideal for e-commerce and subscription packaging. Our corrugated shipping and mailer boxes are fully customizable in size, print, and finish, with recyclable materials available for eco-conscious brands.



Display Packaging and Tray

Display stands and trays are lightweight, strong, and easy to set up. They are widely used in supermarkets, retail stores, and promotions to showcase products while supporting branding with custom printing.





Gable Box

Gable boxes feature a built-in handle and unique top closure, making them both practical and attractive. They are widely used for food, gifts, take-away packaging, and promotional events.



Printed Product Packaging



Style Tuck End / Straight Line / Reverse Tuck

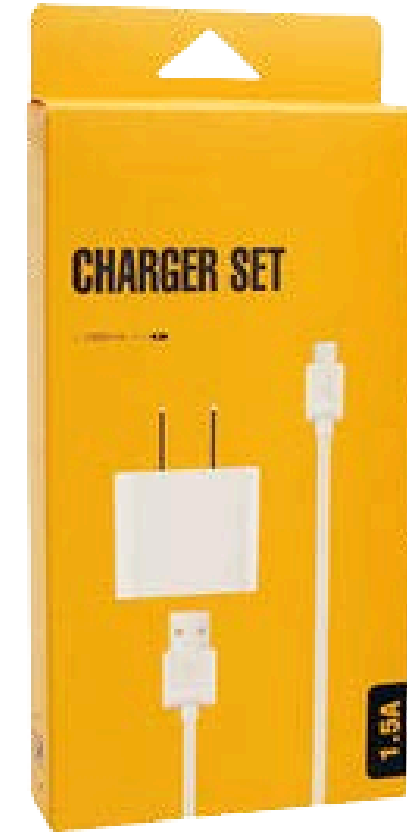
Material Coated Paper/ Kraft/Corrugated Board

Printing Options Offset / Digital / Flexographic

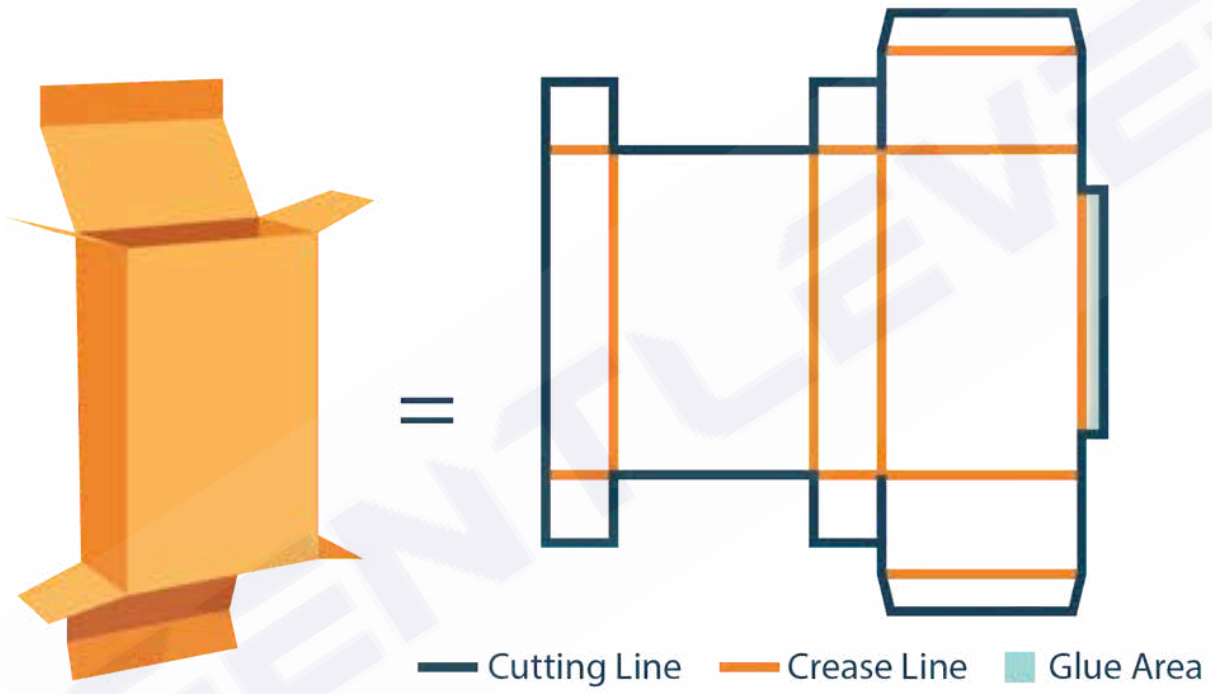
Finishes Matte/Gloss Lamination
Foil Stamping
Spot UV
Embossing/ Debossing

Applications Cosmetics
Skincare
Perfume
Food
Retail Products

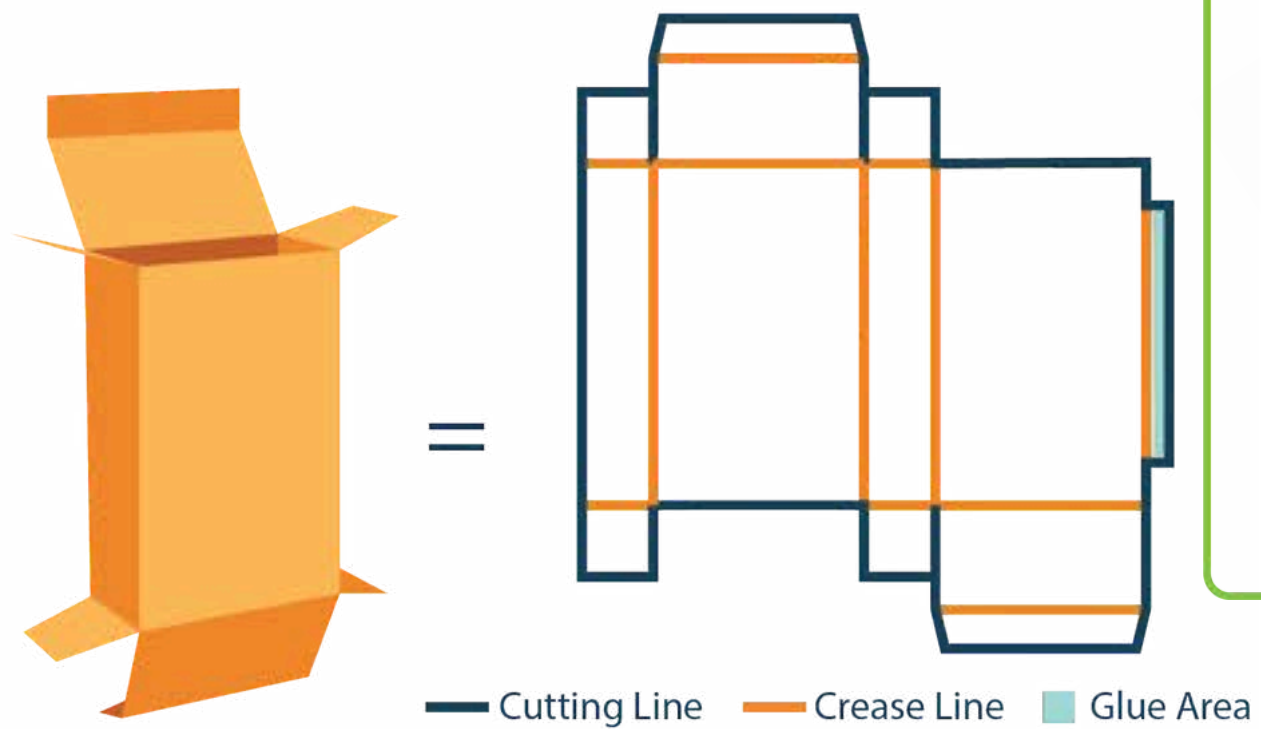
Case Showcase



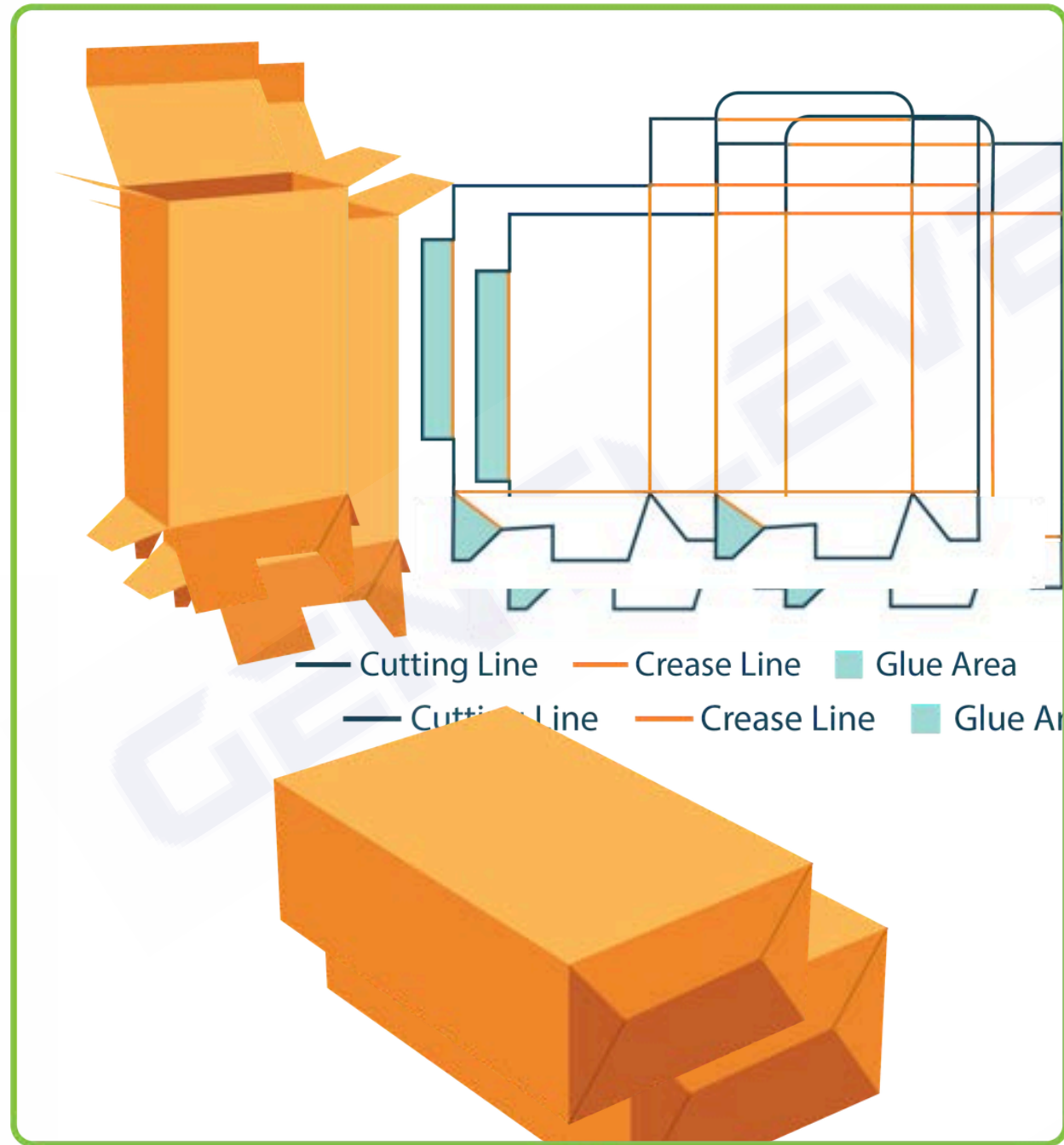
Customization & Dieline Templates



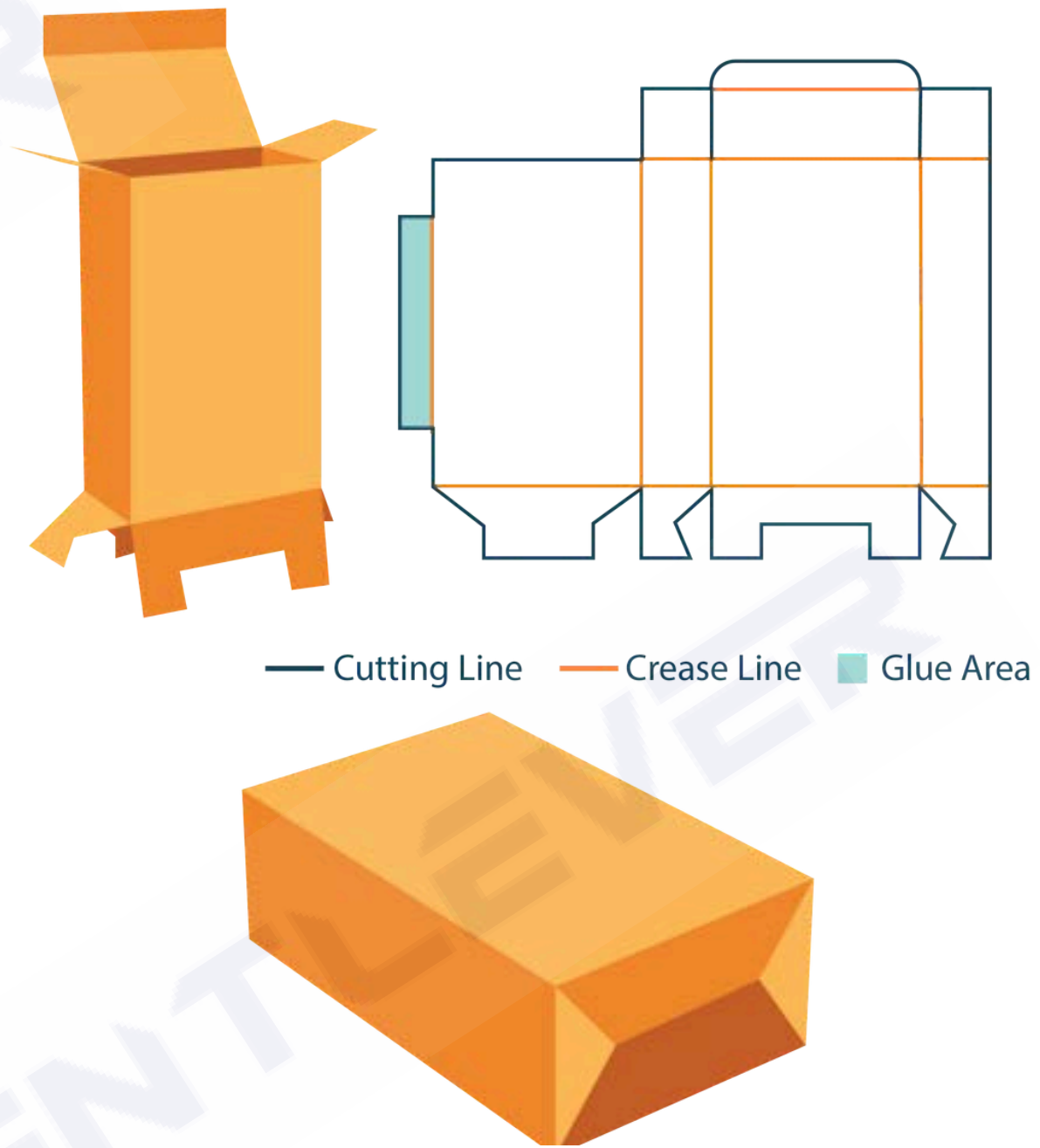
Straight Tuck-End Box



Reverse Tuck-End Box



Snap Lock Bottom Box



Auto Lock Bottom Box

Custom Paper Bags

We provide a wide range of options, including kraft bags, luxury gift bags with ribbons or foil stamping, laminated shopping bags, and boutique retail bags. Each style can be fully customized in size, handle type, printing, and finishing to match your brand identity. Eco-conscious brands can also choose recyclable, FSC-certified, or biodegradable materials, making paper bags a sustainable solution for retail, events, and promotions.



Material Board

White Cardboard



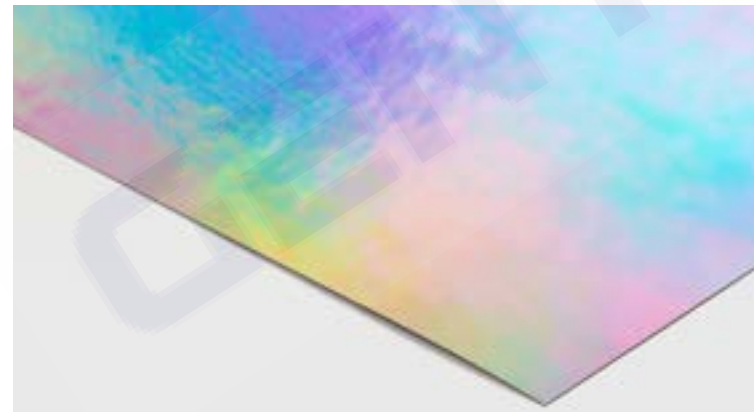
Kraft Paper



Corrugated Board



Holographic



SBS



Fully Recycled CCNB



Premium Material

The choice of material defines both the look and durability of your packaging. We provide a wide range of material options, from eco-friendly kraft to premium specialty papers, allowing brands to achieve the right balance of strength, sustainability, and style.



Material Description



Solid Wood

Smooth coated paperboard is ideal for sharp printing and vivid colors. C1S has one coated side for economical use, while C2S is coated on both sides for a premium look. Common in cosmetics, food, and retail packaging.



Corrugated Board

Multi-layer board offering strength and protection. Available in single-wall for mailers, double-wall for heavier goods, and triple-wall for bulk shipping. Different flute types adjust thickness, durability, and print surface.



SBS (Solid Bleached Sulfate)

A premium fully bleached paperboard with superior whiteness and printability. Works well with offset, foil stamping, and embossing. Widely used in cosmetics, luxury, confectionery, and pharma packaging.



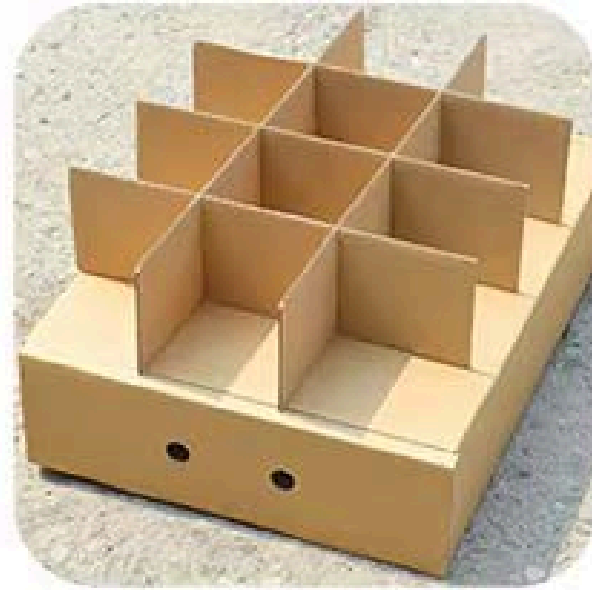
Kraft Paper

Durable and eco-friendly with a natural appeal. Brown kraft is rustic and sustainable, perfect for organic products. White kraft offers a cleaner surface, suitable for food, retail, and e-commerce boxes.



Inserts Choice

To protect and present products securely, we provide a variety of insert options tailored to different industries. Inserts not only keep items in place but also enhance the unboxing experience and add value to the packaging.



Cardboard



EPE Foam



Blister



Silk Fabric



Lafite grass



Laser Engraving



Ribbon



Velvet with EVA

High Quality Printing Methods



Offset Printing

High-resolution printing with vibrant colors and sharp details. Ideal for luxury packaging and complex graphics.



Digital Printing

Flexible and cost-effective for small runs or seasonal packaging. Perfect for samples and fast delivery.



Flexographic Printing

Economical printing method for large-volume packaging. Commonly used on corrugated boxes with simpler graphics.

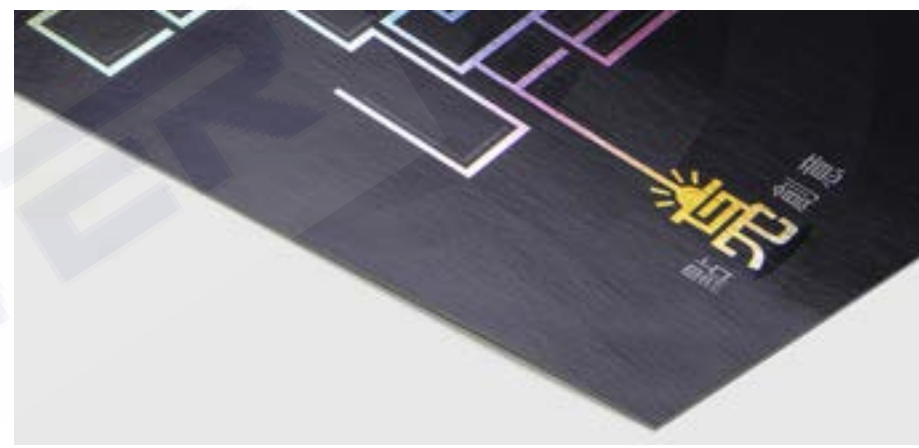


UV Printing

Instant curing with UV light for vivid colors and durable prints. Suitable for cosmetics, electronics, and luxury packaging.



Hot Foil Stamping



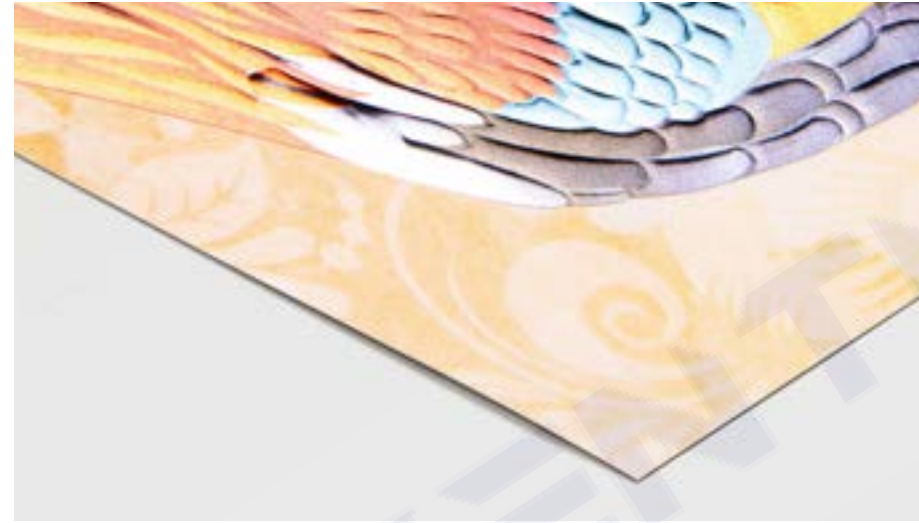
Cold Foil Printing



Blind Embossing



Blind Debossing



Registered Embossing



Spot UV Coating



Combination Embossing

Premium Finishing

Finishing techniques add the final touch that transforms a printed box into a premium brand experience. From metallic foils and textured embossing to soft-touch lamination and clear windows, these options enhance both the look and feel of packaging, making every design more distinctive and memorable.

GENTLEVER

 +86 19970007012

 <https://gentlever.com/>

 info@gentlever.com

 Office: No. 998 Honggu Middle Avenue, Honggutan District, Nanchang, Jiangxi, China

 Factory: Longgang District, Shenzhen, Guangdong, China

